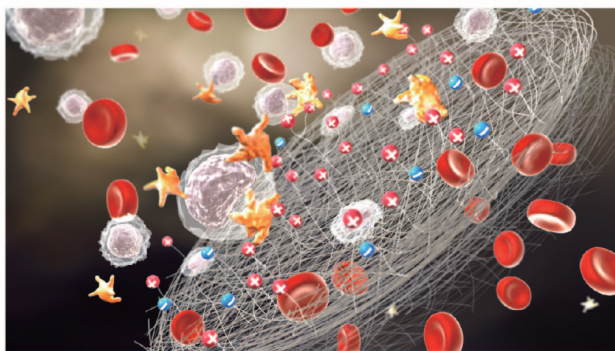


Puriblood Leukocyte Reduction Filtration System

For red cell concentrates

Patented ZISC technology

Capture WBCs ever precisely



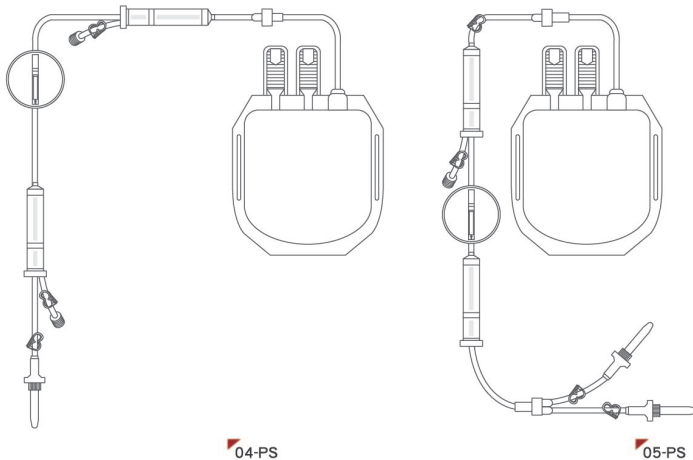
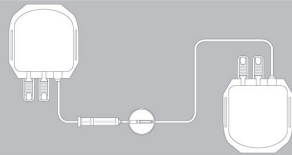
- In compliance with FDA/CE guidance
- Short filtration time
- High WBC removal
- High RBC recovery
- Minimal volume loss



The expert of cell separation

 PuriBlood

Pre-storage (Blood bank use)

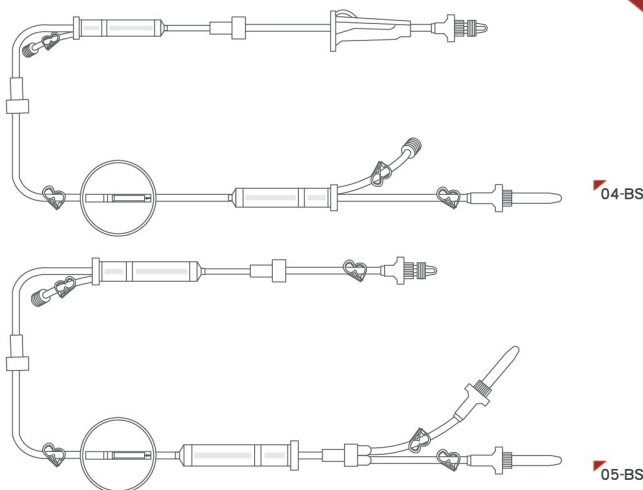
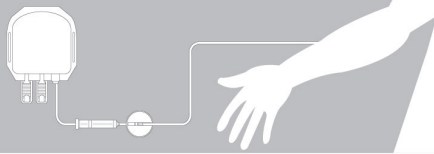


04-PS

05-PS

Article code	LRW-50-04-PS	LRW-50-05-PS
Spike no.	1	2
Clot filter	0	0
Air expel design	Air valve	Air valve
Packaging	25 units/box	25 units/box

Bedside (Use on patient)



04-BS

05-BS

Article code	LRW-50-04-BS	LRW-50-05-BS
Spike no.	1	2
Clot filter	0	0
Air expel design	Air-valve	Air-valve
Packaging	25 units/box	25 units/box

Performance

Volume

280mL-330mL
(Derived from 1 unit of
450-500mL whole blood)

Residual Hold Up Volume

<30mL

Leukocyte Removal Rate

> 99.99%
($< 1 \times 10^6$)

RBCs Recovery

> 92%

Post Filtration Hemolysis

<0.8%

Filtration Time*

Depends on the bloodcondition

<20 mins
(if processed in 2-6°C)

Post Donation Storage

Temperature Performance Parameters

2-6°C



PuriBlood Filter

Filter made by non-woven material with the patented ZISC technology on surface modification. It uses cation and anion charge-bias to capture WBCs and allows better recovery of RBCs.

Hard housing. EtO sterilization. 3 years shelf life from date of manufacture.



Blood tubular filter

150 μm prefilter to remove microaggregate.



Air-venting system

It allows faster deaeration and empty the filter housing backside for minimal volume loss and high red cell recovery.